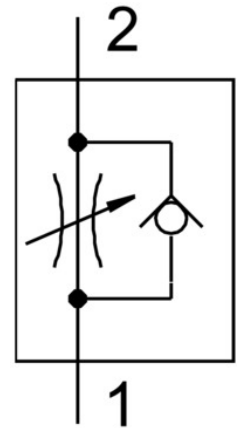


One-way flow control valve GR-QB-5/16-U

Part number: 534683

FESTO



Data sheet

Feature	Value
Type code	GR
Valve function	Flow control non-return function
Pneumatic connection 1	QB-5/16
Pneumatic connection 2	QB-5/16
Actuation type	Manual
Adjusting element	Slotted screw
Type of mounting	Optionally: Line installation With through-hole
Standard nominal flow rate in flow control direction	1016.95 l/min
Standard nominal flow rate in non-return direction	724.576 l/min ... 1029.661 l/min
Operating pressure	-0.951 bar ... 7.998 bar
Ambient temperature	0 °C ... 60 °C
Housing material	PBT-reinforced
Mounting position	Any
Symbol	00991453
Standard flow rate in flow control direction 6 → 0 bar	1716.1 l/min
Standard flow rate in non-return direction at 6 → 0 bar	1754.237 l/min ... 1766.949 l/min
Operating medium	Compressed air as per ISO 8573-1:2010 [7:4:4]
Information on operating and pilot media	Operation with oil lubrication possible (required for further use)
Temperature of medium	0 °C ... 60 °C
Product weight	42.525 g
Material of screwed trunnion	Brass Nickel-plated
Note on materials	Contains paint-wetting impairment substances RoHS-compliant
Seals material	NBR
Releasing ring material	POM
Knurled head material	Brass Nickel-plated

Feature	Value
Material of adjusting screw	Brass Nickel-plated